

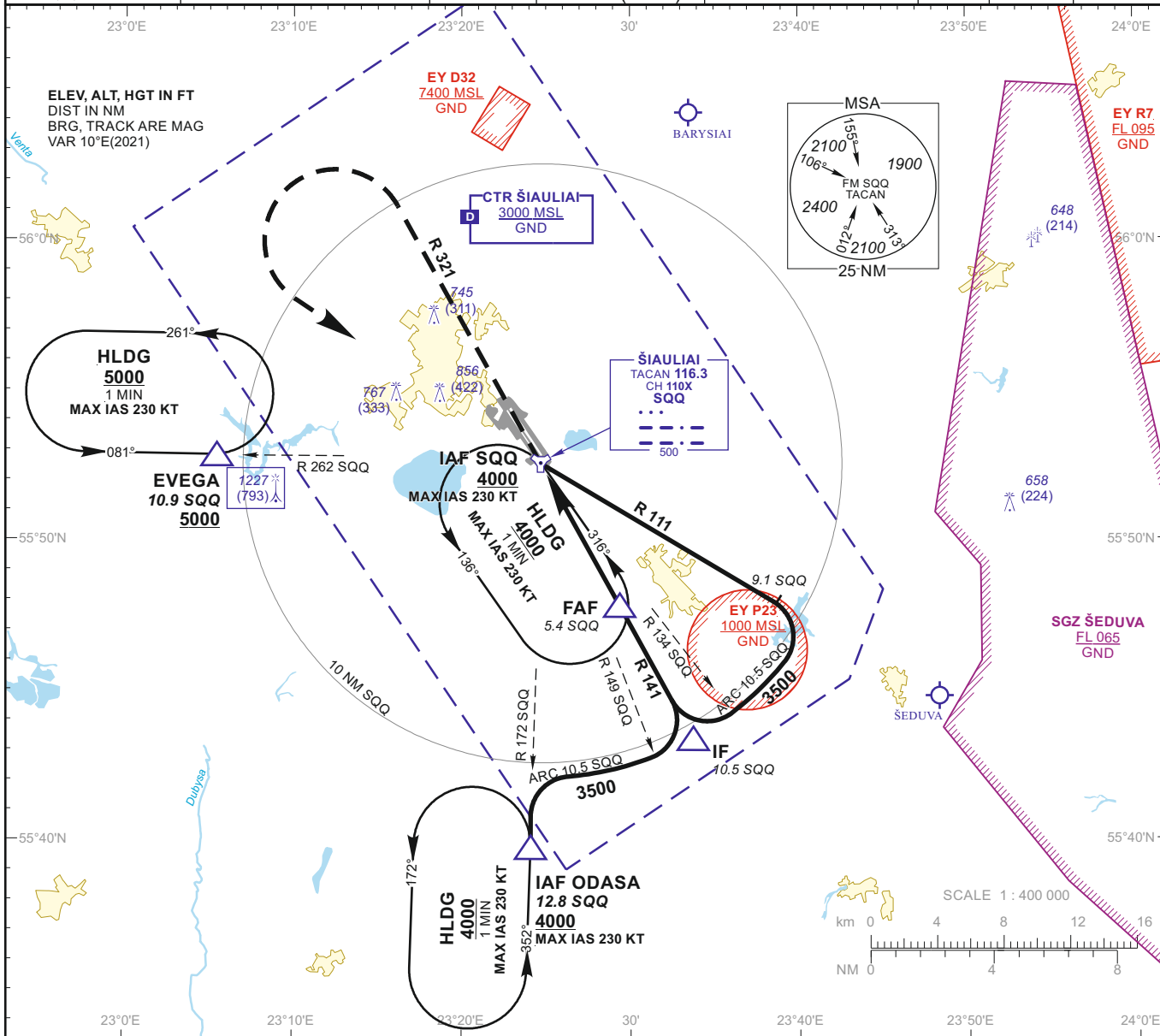
**INSTRUMENT APPROACH CHART**  
for MILITARY ACFT  
TRANSITION LEVEL By ATC  
TRANSITION ALT **5000(4566)**

**AERODROME ELEV 447**  
HEIGHTS RELATED TO  
THR RWY 32L - ELEV 434

TWR 120.405  
ATIS 120.755

**ŠIAULIAI (EYSA)  
TACAN  
RWY 32L (MIL)**

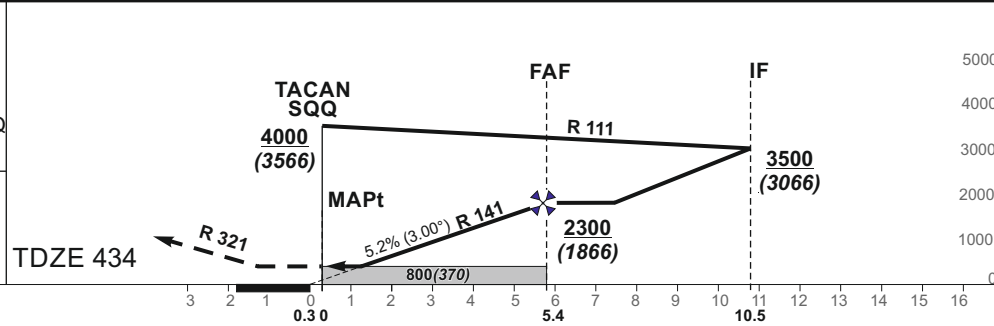
TACAN SQQ CH110X	APP COURSE 321°	FAF ALT 2300	Descent GP 5.2% (3.00°)	MDA 800	TDZE 434	ALS OUT	LDA 10643
---------------------	--------------------	-----------------	----------------------------	---------	-------------	------------	--------------



**MISSED APPROACH**

Climb via SQQ, then on R 321 to 2100, then turn left with MIN bank angle 20° (MAX IAS 230 KT) to SQQ climbing to 4000.

Remarks:  
Timing not authorized for defining the MAPt.



GS	Kts	80	100	120	140	160	180	DIST SQQ	5	4	3	2	1
FAF - MAPt 5.4 NM	min:sec	4:03	3:14	2:42	2:19	2:02	1:48	Altitude	2170	1850	1540	1210	900
Rate of descent (5.2%)	ft/min	415	520	625	730	835	940	Height	(1736)	(1416)	(1106)	(776)	(466)

	STRAIGHT-IN APPROACH			CIRCLING APPROACH			
	MDA(H)	Full	ALS out	MDA(H)	Visibility		
A	800 (370)	RVR 1000m	RVR 1500m	880 (440)	1500m	A	
B				1160 (710)	2400m	B	
C				1260 (810)	3600m	4300m	D
D							D
E							E

INSTRUMENT APPROACH CHART  
for MILITARY ACFT  
TRANSITION LEVEL By ATC  
TRANSITION ALT **5000(4566)**

**AERODROME ELEV 447**  
HEIGHTS RELATED TO  
THR RWY 32L - ELEV 434

TWR 120.405  
ATIS 120.755

**ŠIAULIAI (EYSA)**  
**TACAN**  
**RWY 32L (MIL)**

TABULAR DESCRIPTION

TACAN INSTRUMENT APPROACH for MILITARY ACFT from IAFs (SQQ, ODASA)		
FIX/POINTS	COORDINATES	FIX FORMATION
EVEGA (HLDG)	55 52.87N 023 05.45E	BRG 082.01° / 10.91 NM SQQ
ODASA (IAF)	55 39.77N 023 24.17E	BRG 351.79° / 12.80 NM SQQ
SQQ TACAN (IAF)	55 52.54N 023 24.81E	
IF	55 43.37N 023 33.81E	BRG 321.17° / 10.50 NM SQQ
FAF	55 47.81N 023 29.46E	BRG 321.17° / 5.42 NM SQQ
MAPt	55 52.54N 023 24.81E	
THR RWY 32L	55 52.80N 023 24.42E	
Final approach descent angle: 3.00°		